

# WALLFLORE®PER-i

## Decorative greening system for internal walls and partitions

**WALLFLORE®PER-i** is a unique decorative cladding system for the greening of internal walls.

The **WALLFLORE®PER-i** system has been designed to allow the greening of all types of internal walls, including open-space partitions, with a wide range of panel's dimensions.

The **WALLFLORE®PER-i** system is therefore an alternative, as well as the ideal complement, to other classical decorative partitioning systems such as:

- textiles (fabric panels, etc)
- mineral (marble, granite, stone, plaster, etc)
- metallic (copper, aluminium, SS, etc)
- synthetic (composites, etc)
- timber (panels, boards etc).

Beside its unique aesthetic, the **WALLFLORE®PER-i** system brings further added values not available with other classical partition cladding systems:

- The circulation of water combined with the plants natural respiration increase the RH of the internal atmosphere, increasing the comfort of the building's inhabitants;
- The selection of plants known to remove toxins and airborne pollutants improves the indoor air quality of buildings.



### WALLFLORE®PER-i 4 unique selling points

#### 1- Low installation costs

Light weight modular panels, easy to install, similar to current techniques of modern partitioning systems.

#### 2- Environmentally friendly

The components of the panels and the support system use materials that are 100% recyclable or recycled. Rainwater recycling. Meet the specification of passive building.

#### 3- Low running costs and maintenance costs

The built-in irrigation system allows for the use of recycled water, and can be remotely-controlled. The irrigation drippers can be easily replaced without removing any panels.

#### 4- 10 year guaranty + Insurance

The aluminum system comes with a manufacturer's guaranty and an insurance-backed guaranty of 10 years.



# Technical datasheet WALLFLORE®PER-i

## Standard panel dimensions mm (WxH)

600 x 1000 / 600 x 750 / 600 x 500 / 600 x 250  
300 x 1000 / 300 x 750 / 300 x 500 / 300 x 250  
Cut sizes available upon request.

**Panel's thickness (excluding support system and plants):** 75 mm

## Panels' weight

Based on 600 x 1000 mm panels: 15 to 18 kg  
i.e. 25 to 30 kg per m<sup>2</sup>

## Components

### Growing Substrate

**SAINT-GOBAIN/CULTILENE** horticultural stone wool (80 kg/m<sup>3</sup>) with a lifetime greater than 5 years, and 100% recyclable at end-of-life.

### Panel Structure

Invisible structure made of Aluminium 5083 (AG5).

### Envelope

Non-woven felt made of recycled PP and PE, treated anti-UV. Colour: dark grey (RAL 9011).  
guaranty of 5 years

### Support system

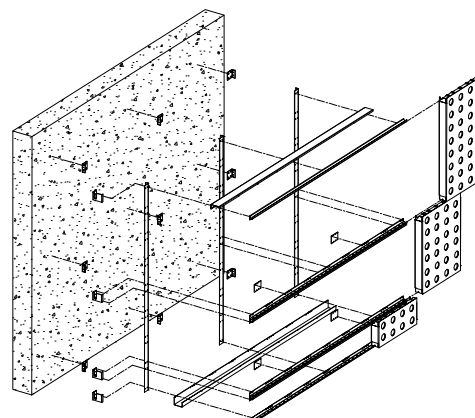
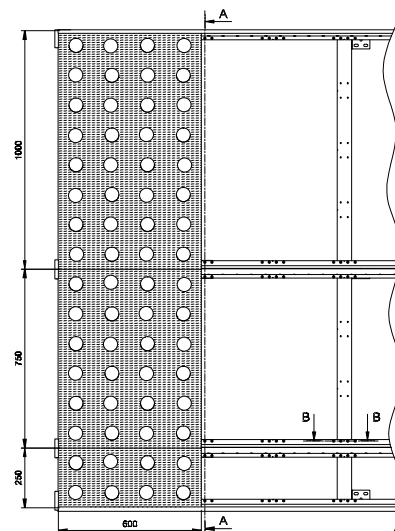
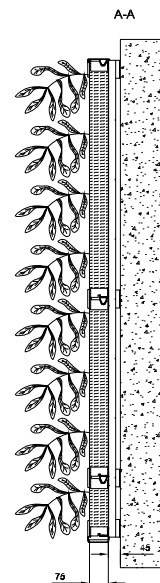
Proprietary brackets, vertical and horizontal rails (aluminium 5083). Fitting of the panels from the front.

### Irrigation system

The proprietary built-in network of irrigation drippers in the support system's rails brings to the plants the precise amount of nutrients and water. The irrigation is fully automated and remotely controlled via an irrigation station, typically located in the plant room of the building.

### Plants

Perennial plants adapted to each project's light level. (standard range of 12 species).  
Plants density :  
32 plants per panel 600 x 1000 mm  
(54 plants per m<sup>2</sup>).



## WALLFLORE® SYSTEMS N.V.

Raadhuisplein 41

5121 JZ Rijen

The Netherlands

+31(0)161 22 89 55

+31(0)161 22 89 50

info@wallflore.eu

www.wallflore.com